



*A message from the Primary Cluster Headteacher*

### Dear Parents and Carers,

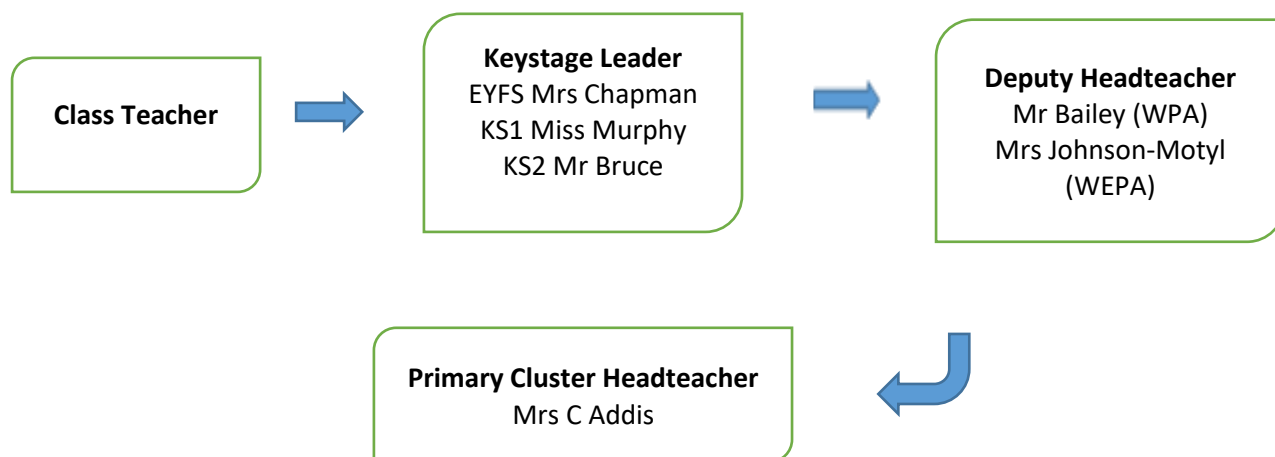
Welcome back to all our families after what I hope was a relaxing and enjoyable summer break. I also wish to extend a very warm welcome to our new families at both Wellington Eagles Primary Academy in Ludgershall and Wellington Primary Academy in Tidworth.

With over 450 pupils across the 2 primary sites, there is no better time to be part of the Wellington Family. We have 220 new pupils and 20 new staff across both schools, so this year is a real turning point as we look to how we grow together to become schools where the learning and happiness of all our pupils is at the centre of all we do. Our over-arching values are Kindness, Bravery and Honesty. I firmly believe that if we all lived by these values, we would thrive, as would those around us. As our pupils inevitably face challenges getting to know the new systems, routines and friends in their new classes, returning to these 3 values will help them to make the right choices.

As well as these, each term, our curriculum is linked to one of the following 6 values: **Team Player, Thinker, Positivity, Resilience, Aspirational, and Enthusiastic**. As well as linking our curriculum to these values, we focus on what they mean in assemblies and PSHE lessons.

### Communication

If you do have any concerns, please speak to your child's class teacher in the first instance. They know your child best. If you feel your concern has not been fully addressed, please see below for the next steps



Any pastoral concerns should be directed to Miss Handley-Wells, our Nurture Manager or Mrs Candler Blanking (CB) our Welfare and Attendance Manager.

Any SEND concerns should be directed to Mrs Stellan, our SENCO (based at WPA) or Mrs Bannister, our Cluster SENCO.

## Websites

We will be keeping the websites up to date with all relevant information and it should be your first port of call when you want to check term dates, read a school policy, check the school calendar for events or download a recent letter. Teachers will also be keeping their class pages current with information about what your child is learning at school and information on how to support your child's learning.

The 2 school websites are:

[www.wellingtonprimary.org.uk](http://www.wellingtonprimary.org.uk)

[www.wellingtoneagles.org.uk](http://www.wellingtoneagles.org.uk)

## Good to be Green



All children have been given our Good to be Green leaflet to bring home. Please keep this displayed at home to reinforce our positive behaviour system with your child. At the end of each week, there is a Club Friday activity that your child has chosen and is to acknowledge and reward their good behaviour that week at school. If they have not stayed on green all week and received a red card, they will miss 5 minutes of Club Friday in order to understand the consequence for making the wrong choice. However, they still join in with the remainder of Club Friday as we understand that we all sometimes make wrong choices and we want to learn from that and move on.

If your child has received a red card, you will receive an email to let you know. If it was for one of our

Non-negotiables, no further details will be given. If it is for another reason, further information will be given in the email.

Non-negotiables:

- Using inappropriate language/gestures
- Hurt another child
- Absconding from class
- Stealing
- Damaging school property

We aim to inform parents on the day the red card is issued so that you can discuss this with your child and encourage them to make better choices. However, the system automatically sends parent alerts in the afternoon so if a teacher logs the red after that time, parents will not receive an email until the following day. Please feel free to contact your child's class teacher to discuss the events which led to them receiving a red card; we are very keen to work together for the best possible outcomes for your child and discussing ways to support your child is always beneficial.



## Welly Extra

Both our sites operate Welly Extra, which is our in-house breakfast club and after school care. To book a place for your child, you need to sign the terms and conditions and register your child. Welly Extra will contact you to confirm if the places you have requested are available and Scopay will then be activated to allow you to book and pay for the place. If the times you have requested are not available, we do operate a waiting list and you will be contacted as soon as a place becomes available.

Prices and further information are available on the school websites.

## Reminders to Parents

All parents are to return their child/children's 'Arrangement for home time' form, including the password that they will give should a different parent collect their child. Please remember, the person collecting your child up to Y4 must be over 16. Children in Years 5 & 6 can walk home unaccompanied if you have signed a consent form.

## Aldi Kit for School Campaign



Aldi have launched a great campaign to encourage our children to eat healthily. For every £30 spent in Aldi, parents will receive a special Team GB athlete sticker. We need to collect 300 stickers, to complete our Kit for Schools poster and we will receive school sports kit and get entered for a prize draw. If you or any family or neighbours shop in Aldi, please ask them to collect the stickers and bring them into school to add to our chart. Thank you

## PE

We value the opportunity to participate in PE lessons on both sites and want to ensure all children can benefit from the health & social benefits of physical exercise. Therefore, please have correct PE kit in school all week as although each class has a set day for PE lessons, this may change due to weather. If your child has pierced ears, they should remove studs prior to their lesson. If they are unable to do this, they must supply tape and cover their ears to avoid possible injury.

## Eagle's to join 'Daily Mile'

Eagles children will be regularly taking part in a 'Daily Mile', an initiative to encourage our children to keep fit & active every day. At Eagles, children will have access to the school field and will enjoy a walk, jog or run with their teacher & class mates regularly throughout the week. Please make sure the children always have trainers to change into so they don't get muddy school shoes!

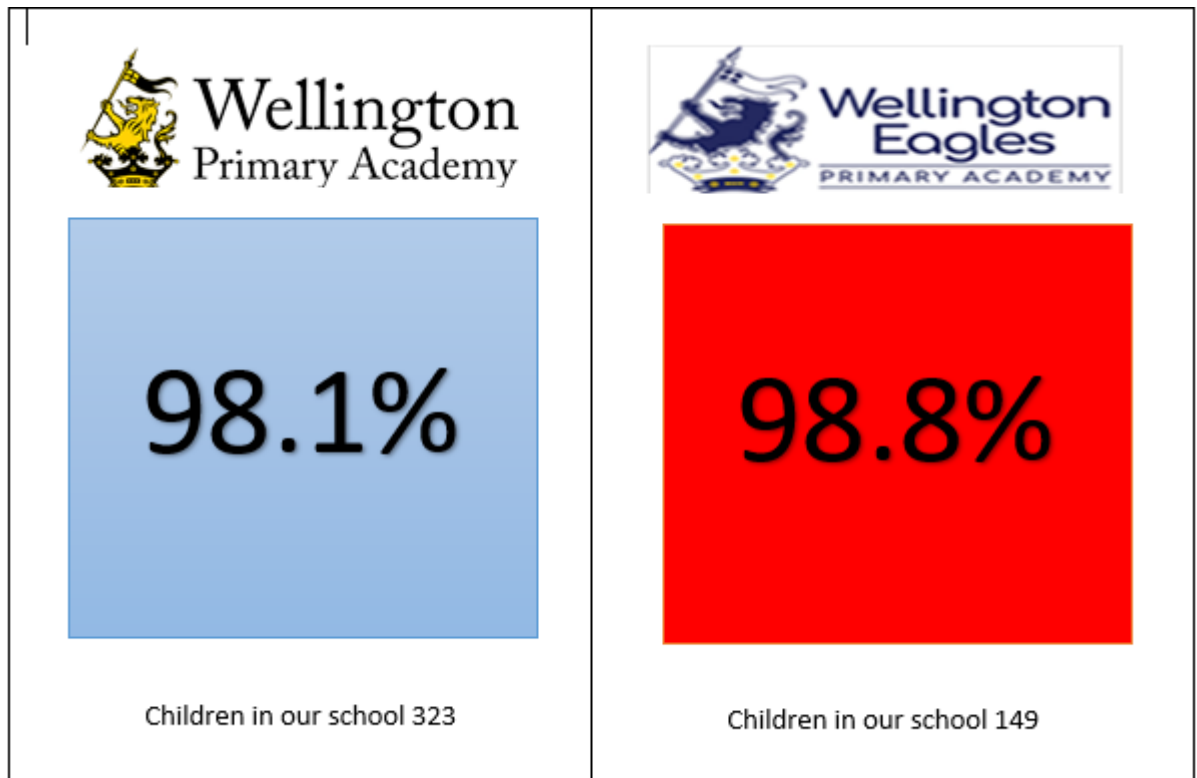


### Home Learning

We believe home learning is most effective when supported and shared with parents. Therefore, each term, you will be sent an electronic copy of the topic web for your child's year group to enable you to see what they will be learning and we encourage you to support this at home through visits, reading books and discussing relevant themes.

You will also be sent the Key Words for your child's Key Stage. This is to act as a checklist for you of the national expectations for your child, although please remember that each child learns at a different pace and your child may not be ready to access all the words on the list for their year group.

### Attendance



It's a new academic Year and we have a new member to our Wellington Family. Attendance matters to us therefore it is important that your child attends school every day.

Always remember to contact the school if your child is unwell and will not be able to attend school, you MUST give as much detail as possible.

Try and make all medical appointment in school holidays, out of school hours or late in the afternoon where possible.

Wellington College's attendance expectations for each pupil is 97%.

Each week we will have a competition on which class can get the highest percentage in their school and they will win stickers and biscuits.

WELL DONE! Attendance is looking great but we need to keep it in the 98% or even higher.



## **The Wellington Academy**

### **Core Values**

Our Values are those attributes that we hold dearest to us. For the realization of our vision it is inevitable that our core values are perfectly aligned with that which we aim to become. Our values therefore are:

#### **Happiness**

Our community members must be in a state of wellness and contentment to achieve the very best outcomes. Therefore for us a state of happiness is key to the success of all. We strive to ensure we quickly address those things which may affect the wellness of our students and staff through strong systems of support.

#### **Achievement**

Achievement is our core business. We must ensure we add real educational value to our young people by making sure they make good progress in all they do and attain the very best grades and qualifications whilst with us. We do not however just celebrate academic achievement but are developing a culture based on celebrating all strengths and successes of both students and staff.

#### **Limitless**

As the future becomes even more unpredictable and pathways become blurred we believe that we must never put limits and ceilings on the dreams, ambitions and learning of our community members.

#### **Aspirations**

Our ability to dream and imagine is what makes us uniquely human. As an Academy we create opportunities for our young people to dream big and strive to open up the world of opportunity to every single one of them.

#### **Value**

Human life, gifting, talent and potential is precious therefore as Academy we see it as priceless and as a great asset to our community. We strive to recognize that value through our daily interactions and opportunities given, to add even greater value, by each individual, to our community.

#### **Respect**

We are diverse and unique and differ in values, opinions and experiences. Our combined cultures are rich. We ensure that our strong pastoral and personal wellbeing systems makes it possible that everyone feels they can express themselves responsibly and in a safe environment.

#### **Self –belief**

We strive to develop a strong sense of self amongst our students and staff. It is therefore important that our community is made up of happy individuals who are confident, believe in themselves and understand their value and worth to the Academy as well as local, national and international community.

#### **Community**

Finally community is at the heart of who we are. We have strong community links as a Trust and work not only within the Trust but also the local community of Tidworth to realise our vision.

**Wellington Primary/Wellington Eagles**

#### **Core Values**

Enthusiastic, Resilient, Team player, Thinker, Aspirational, Positivity

